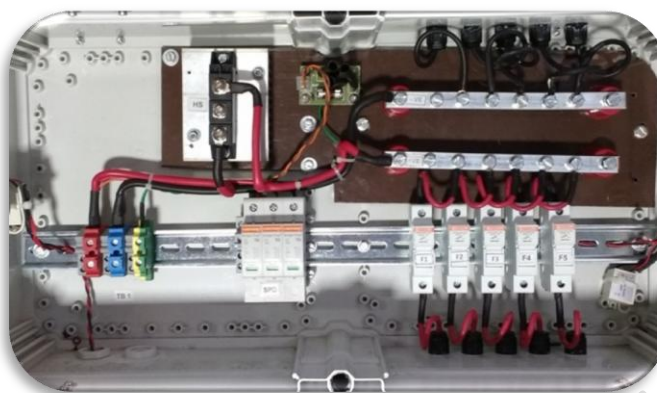


## Array Junction Box Specifications



Parameters	
Maximum DC Input	1000V
No. of DC Inputs	2 to 16
No. of DC Outputs	1
Number of Terminal Blocks	2 to 34
Reverse Blocking Diode	1 to 16
Maximum Input Fuse Rating- Type	3/5/10/12/15/20 - Semiconductor
Maximum DC Current (A)	100
Maximum Continuous Current (A)	160
Isolator/MCB	16/32/40/63
Maximum Voltage, VDC	600/1000
+Ve Input wire size, 1C x sqmm	2.5 to 10
-Ve Input wire size, 1C x sqmm	2.5 to 10
Surge Protection Device (SPD)	600/1000V, Class II
Operating Temperature	-25° to 55°
Enclosure Type	PS/PC
Protection Type/Protection Class	IP 65
Cable glands clamping range	12 to 32
Wall Mounting	Yes
Bus Bar	Yes
Operating Condition	-20°C to 55°C
Type of Protection (As per requirement)	Short – Circuit, Surge
Design Life	25 Years